



Lutheran
Services

Youth & Family

Breakthrough.

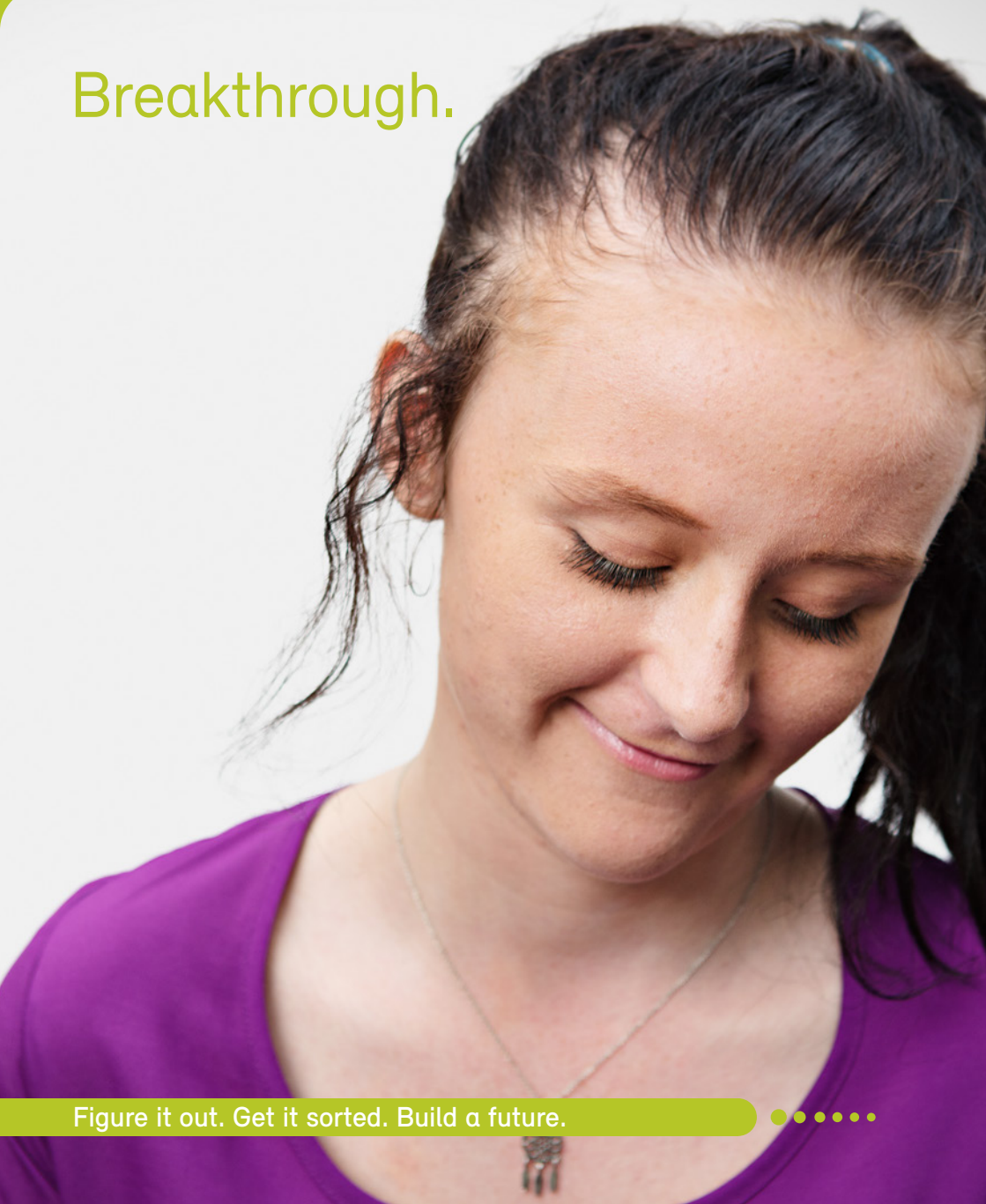


Figure it out. Get it sorted. Build a future.





“Things started falling apart
at school when Dad died.
With some support, Mum and
I get along a lot better
and I’m no longer clashing
with my teachers.”

– Pam, 15





Let's figure it out together.

Lutheran Services offers young people and their families support and referrals to help them find their way to a positive future.

Our team understands that life is never black and white, and that everyone's situation is different. While things can seem complicated, there is always a way forward.

Our Youth and Family services work with young people to help them stay connected with their families and communities. As they are becoming independent and building their future, our experienced team of professionals are there if they need us.

We are there for young people who are:

- finding school tough
- homeless or at risk of homelessness
- in an unstable family situation
- living independently but struggling
- wanting to access education options
- living with mental illness or a disability

Where we fit in.

To help young people stay connected with their families and communities, our two Youth and Family services are staffed by dedicated youth case managers, ready to listen and experienced in responding to a range of circumstances.

We can help young people make sense of what's going on and break through so they can build the future they dream of.

Our services vary from location to location.
They may include:

- counselling and case management
- family unit mediation
- emotional and social support
- group and one-on-one development programs
- parenting education and skills
- referrals to specialist supports
- help to develop every day life skills

We also work with families and carers to assist with communication and dealing with conflict; supporting the family to stay connected.





A positive future is possible.

Our services are designed to support young people build the life they hope for.

Our professional youth case managers will help and guide young people to:

- connect with appropriate support services
- develop the skills required to live independently
- stay in school when things get tough, or participate in alternative education
- link in with employment and training options
- re-engage with community or family where appropriate
- work things out with parents and family
- access practical and financial supports for independent living
- connect with programs that help address issues such as low self-esteem and relationship building





Young people building
their future—their way.



Experienced enough to deliver. Small enough to care.

Serving people and communities since 1935.

Lutheran Services provides quality and contemporary support and accommodation for older people, young people and their families, people living with disability or mental illness and families experiencing domestic violence and hardship.

Fulfilled people. Thriving communities.

The services, care and accommodation we provide encourage those we serve to pursue the life they hope for and the communities we are part of to thrive.

Lutheran Services is for everyone.

At Lutheran Services, we unconditionally welcome all. In Christ's love, everyone is someone. We exist to serve. It is how we bring our Christian faith to life.







**Lutheran
Services**

Youth & Family

Getting started:

Young people may refer themselves or be referred by their school, other community organisations and government departments. Families may also contact our services to seek information or assistance. Some eligibility criteria may apply.

• Intercept, Caboolture

• Bridges Reconnect, Woodridge

Contact us to help you get started.

e. contact@lutheranservices.org.au | p. 07 3858 3000

w. lutheranservices.org.au



**LUTHERAN
CHURCH**
OF AUSTRALIA

*where love
comes to life*